

**R40 per m<sup>2</sup>**

283m<sup>2</sup> Warehouse To Let in Kya  
Sands

1 Elsecar street

Web Ref: FHC73



**Naas Hattingh**

Agent

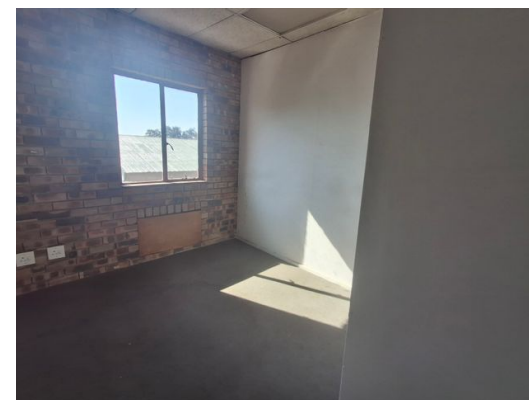
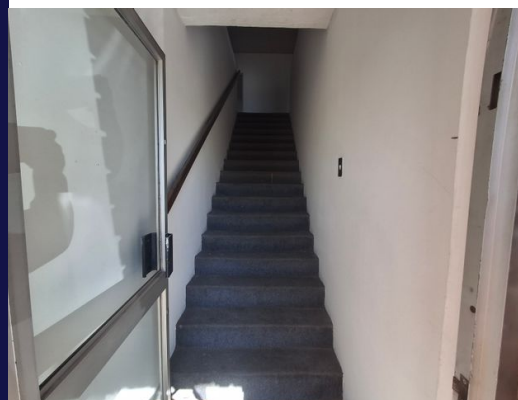
Registered with PPRA (FFC 1236045)

**082 416 9317**

naas.hattingh@finehome.co.za



Web Ref: FHC73



[www.finehome.co.za](http://www.finehome.co.za)



# Neat industrial unit to let in Kya Sands

On offer is a neat industrial unit in a secure industrial park in Kya Sand. The unit which measures 283m2 in size offers great height to the eaves measuring at 6m. Access to the unit is gained through a 4,5m high roller shutter and the small office component has its own separate entrance. The unit features full staff ablutions on the ground floor as well as a small kitchenette. The neat office component is situated on the mezzanine level and features a separate toilet.

The unit boasts 100 amp three phase electricity which makes it ideal for light manufacturing or warehousing. The unit has ample parking in the front as well as additional parking in the park. The park has excellent security with 24 hour access control as well as patrolling guards around the clock. The park which is centrally located to all arterial routes has spacious drive ways allowing easy access for delivery. Units of this size is scarce so do not hesitate to make contact in order to secure this gem.



## Monthly Rates

R1 Excl. VAT

## Zoning

Industrial

## Exterior

Security No

## Sizes

Floor Size 283m<sup>2</sup>

Land Size -

