

R115 per m²

301m² Building To Let in
Rosebank

6 Hood Ave

Web Ref: FHC75



Camilla Lear

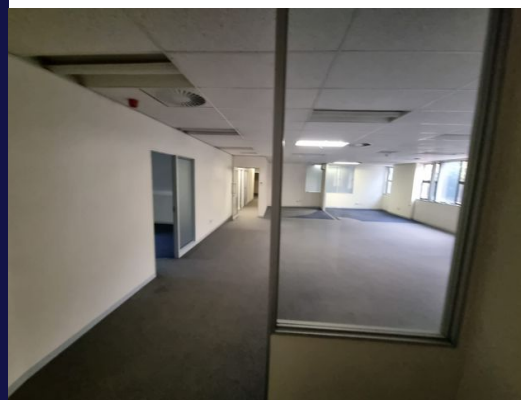
Candidate Property Practitioner

072 807 7700

camilla.lear@finehome.co.za



Web Ref: FHC75



www.finehome.co.za

Exquisite office space right in the center of Rosebank

On offer is 301 m2 of elegant office space in the sought-after 6 Hood Ave precinct. The 301 m2 forms part of the 5000m2 total GLA this magnificent multi-purpose building has to offer. The space on offer has easy access to the communal lifts and bathroom and boasts an internal kitchenette. The building offers high-level security with access control monitored around the clock. There is ample open parking, catering to every office's individual parking requirements.

6 Hood Ave is situated off the main arterial route Jan Smuts Avenue, in the heart of the buzzing Rosebank CBD. This landmark building not only offers you a prestigious address but also easy, functional access to all staff as it is situated on a main public transport route and within walking distance from the Gautrain station. This classic building offers units ranging from 50 to well over 200sqm, with a total building GLA of 5000sqm. This commercial precinct finds itself within walking distance of the Rosebank Gautrain station as well as other sought-after establishments, such as The Firs and The Zone@Rosebank.

6 Hood Ave has established itself as a landmark in the continuously developing Rosebank district. The building is monitored by high-level security and provides ample parking space and a sense of security. The building offers a professional environment with modern common areas.

Furthermore, the building has unbeatable exposure to one of the busiest intersections in Rosebank, offering great finishes throughout the building with high-end retail stores and restaurants.



Monthly Rates

R1 Excl. VAT

Zoning

Commercial

Exterior

Security Yes

Sizes

Floor Size 301m²

Land Size 5,000m²

