

**R1,228,920**

154m<sup>2</sup> Office For Sale in Laser  
Park

1494 Cranbury street

Web Ref: FHC93



**Naas Hattingh**

Agent

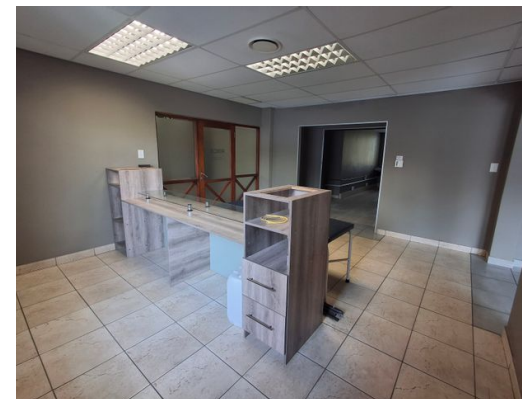
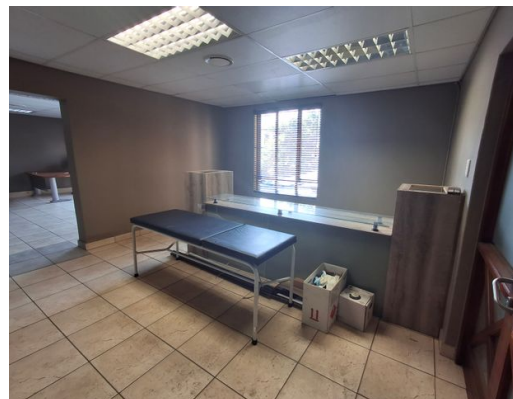
Registered with PPRA (FFC 1236045)

**082 416 9317**

naas.hattingh@finehome.co.za



Web Ref: FHC93



www.finehome.co.za

## A Grade Office Space for sale in Laser Park

On offer is an investment opportunity for a tenanted 154m2 of elegant sectional title office space for sale in the sought after Wild Fig Business Park located in Laser Park/Honeydew. The office includes open-plan areas, private offices, a kitchen, air conditioning, and a balcony. Additional features include carpeted flooring, standard office lighting, and ample natural light. The building is equipped with a backup generator, and 24-hour security. The space on offer has easy access to the communal bathroom. The building offers high-level security with access monitored around the clock. Parking bay allocation is included in the selling price.

Wild Fig Business Park is an A Grade business park based in Laser Park/Honeydew, Roodepoort. The park has 24 Hour security on site and a backup generator connected to each unit. Wild Fig Business Park has easy access to the residential areas and public transportation. The Park is situated just off Beyers Naude drive with quick access to both the N1 and N14 freeways. It offers impressive double-volume arched entrance halls. All doors and windows are framed in solid wood and the units boasts central air-conditioning and window blinds. The park is registered under a body corporate scheme. The managing agent will be responsible for the security, landscaping, cleaning and maintenance to the common areas of the buildings.



### Monthly Rates

R1 Excl. VAT

### Zoning

Commercial

### Exterior

Security No

### Sizes

Floor Size 154m<sup>2</sup>

Land Size -

